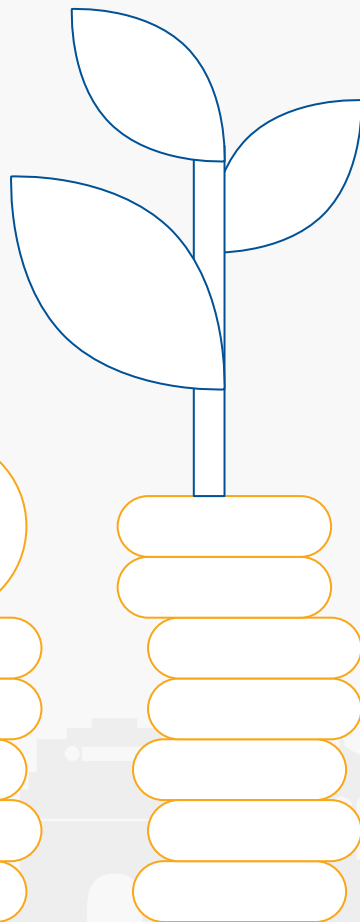


SUNDARAM ASSET MANAGEMENT
Singapore

Sundaram India Opportunities Fund

November 2022

Sundaram India Opportunities Fund (SIOF) is a Fund of Funds with a diversified exposure to Indian equities across the different market cap curves.



Investment Objective

To deliver ahead of market returns over the medium and long term by taking advantage of the opportunities present in the Indian equity market as identified by the Sundaram Mutual Equity team.






Investment Strategy

To invest primarily in the best of equity funds from the Sundaram Mutual stable.

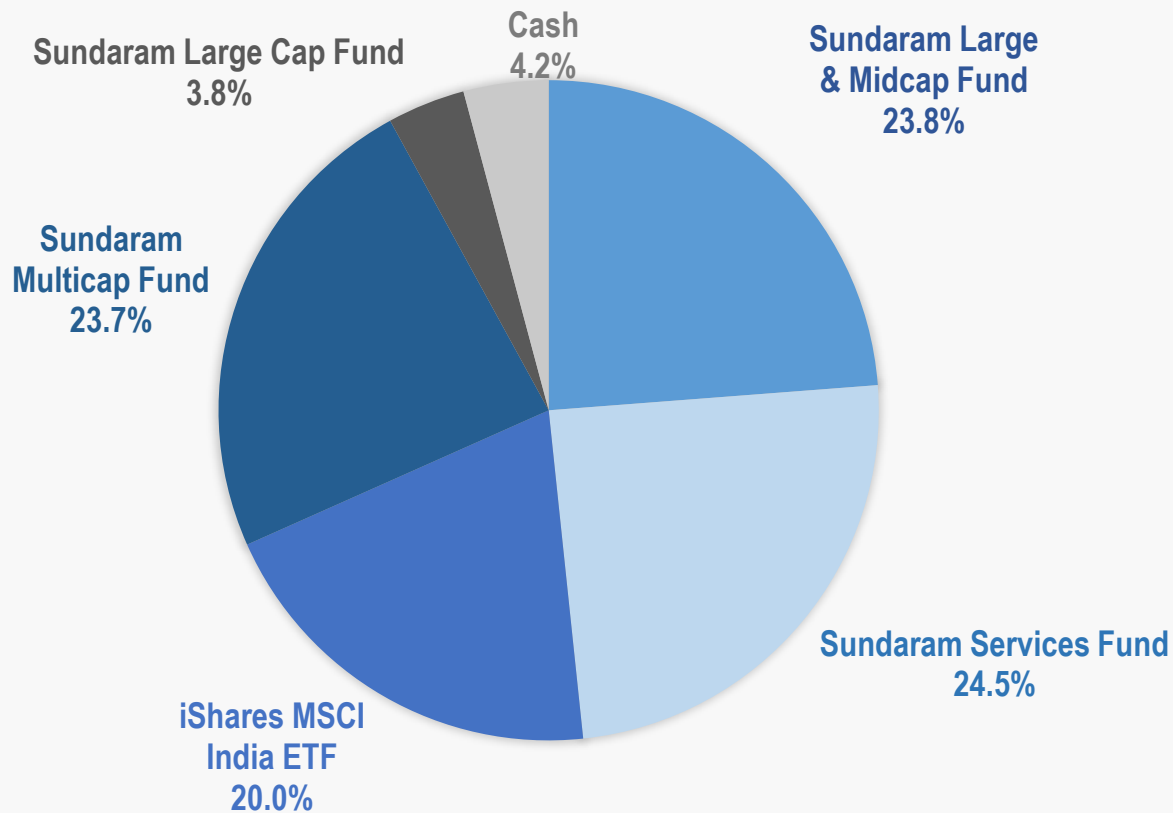
Component Funds to be hand picked India domiciled equity funds managed by Sundaram Mutual, with a small exposure to India ETFs.



Investing in SIOF enables an investor to:

-  Reduce single manager risk and bias
-  Gain exposure across the cap curve on a consistent basis leading to return optimization
-  Access to a variety of professional actively managed Funds, all of which have different portfolio concentrations

Risk mitigation via dynamic allocation across component Funds and the cap curve based on Investment Manager's view of the state of the Indian economy and market.



The Fund was incepted on 17 December 2021 and took approximately one month to get fully invested.

Until the FPI license was received for the Fund, the entire investment was in US-listed iShares MSCI India ETF.

ETF position is being switched progressively to preferred Sundaram India Funds.



As of end October, the portfolio is split between four Sundaram India Funds (Sundaram Large & Midcap Fund, Sundaram Multicap Fund, Sundaram Services Fund, Sundaram Large Cap Fund) and iShares MSCI India ETF

Sundaram India Funds have been picked by analysing the best performing funds within the Sundaram stable

USD Returns				
Fund / ETF / Index	1 Month	Year to Date	1 Year	3 Years
Sundaram Services Fund	+ 2.3%	- 5.2%	- 5.3%	+ 17.0%
Sundaram Large & Midcap Fund	+ 1.2%	- 9.7%	- 8.0%	+ 13.6%
Sundaram Multicap Fund	+ 0.4%	- 8.9%	- 6.8%	+ 13.7%
Sundaram Largecap Fund	+ 3.7%	- 5.6%	- 6.0%	+ 9.9%
iShares MSCI India ETF	+ 3.5%	- 7.9%	- 8.1%	+ 9.2%
BSE 500 Total Return Index	+ 2.3%	- 6.0%	- 5.9%	+ 12.5%

USD Returns					
Period	Fund	BSE 500 TR Index	Excess Return	MSCI India TR Index	Excess Return
One Month	+ 1.6%	+ 2.3%	- 0.6%	+ 2.6%	- 1.0%
Year to Date	- 7.9%	- 6.0%	- 1.9%	- 7.4%	- 0.5%
Since Inception*	- 6.7%	- 1.9%	- 4.8%	- 2.9%	- 3.8%



The Fund allocates up to 100% in Indian Equity Funds and Equity ETFs

Underlying investments via suitable funds and ETFs into Indian equities

Underlying Asset Classes	Indicative Fund Allocation	Risk Profile
India Equity Funds		
India Equity Related ETFs	0-100%	High-risk
India Securities-related Index Funds		
Cash & Cash Equivalents	0-30%	Low-risk

Initial asset allocation is likely to be as follows:

23%

each in Sundaram Services Fund, Sundaram Large & Midcap Fund, Sundaram Multicap Fund and Sundaram Largecap Fund.

5%

in MSCI India ETF and

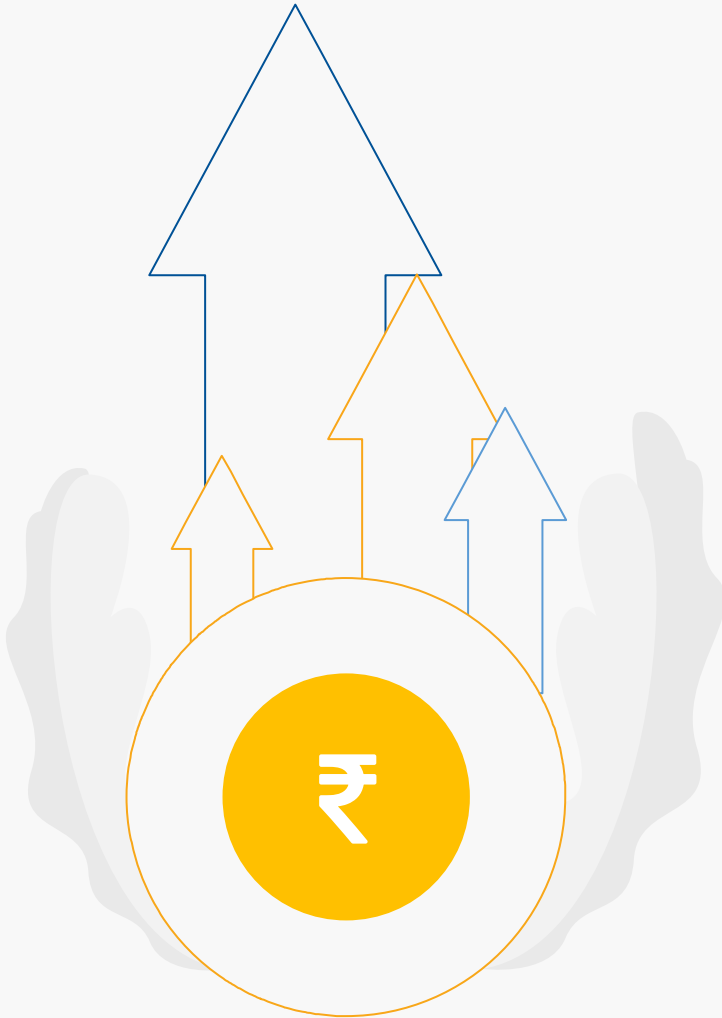
3%

in cash for liquidity and tax management purposes.

This allocation has been arrived at by picking the best performing Sundaram and Principal* funds and overlaying it with risk mitigating adjustments to ensure optimal cap curve positioning.

Fund Name	Allocation (%)
Sundaram Services Fund	23%
Sundaram Large & Midcap Fund	23%
Sundaram Multicap Fund	23%
Sundaram Large Cap Fund	23%
MSCI India ETF	5%
Cash & Cash Equivalents	3%

* Principal Asset Management Private Limited was acquired by Sundaram Asset Management Company Limited in January 2021 and the transaction was completed by December 2021

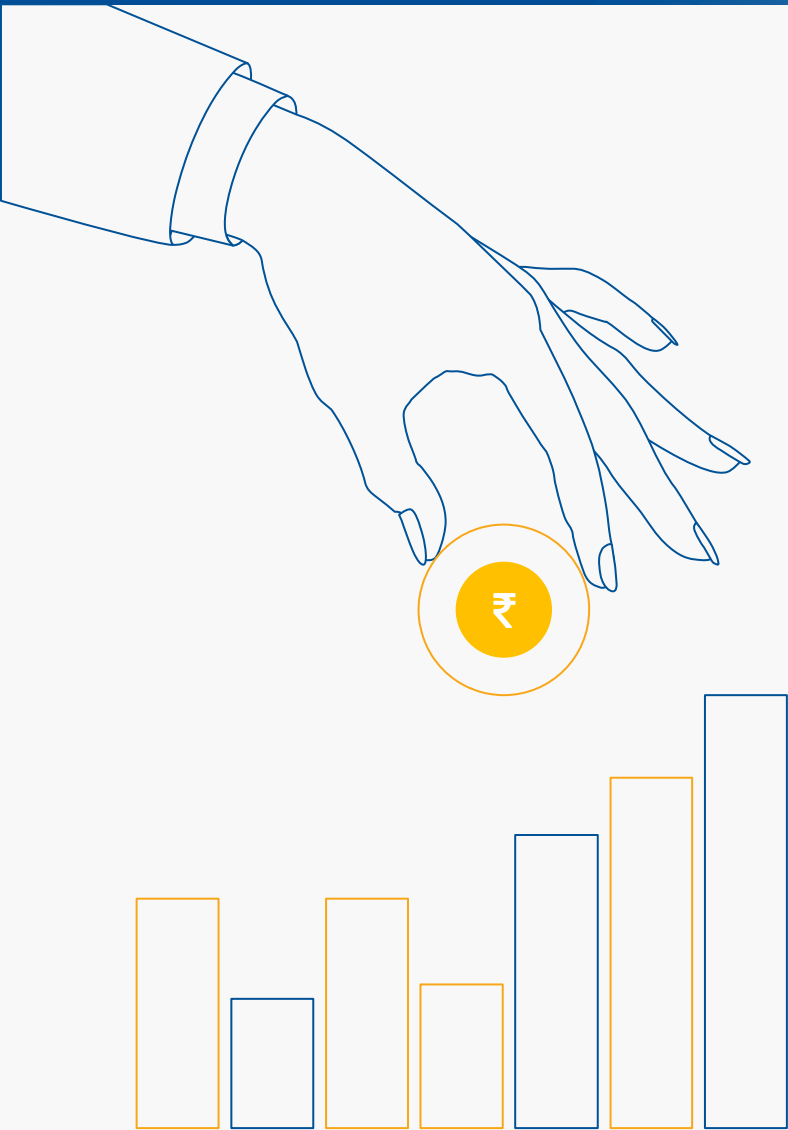


Sundaram Services Fund

- Invests in companies that are part of the Services sector of the economy, across 6 key themes and 15 sub sectors
- Multi cap portfolio offering investment opportunity across the cap curve
- Optimally diversified portfolio of ~45 stocks

Sundaram Large & Midcap Fund

- Well diversified portfolio across high growth Large and Midcaps
- Minimum 35% investment in each category (Large & Midcap)
- The core investment philosophy and strategy for the Fund is to own good growth businesses at a reasonable price considering a 3-year outlook
- Principal Emerging Bluechip Fund was merged into this Fund in December 2021



Sundaram Multicap Fund

- Multicap portfolio investing a minimum of 25% each in Large, Mid and Small caps
- Offers better risk-adjusted returns compared to single cap funds
- Portfolio construction is through bottom-up approach across overarching themes driving economic earnings and growth
- Principal Multicap Growth Fund was merged into this Fund in December 2021

Sundaram Largecap Fund

(Erstwhile Sundaram Bluechip Fund)

- Comprises of Largecap companies that have stable business models and are resilient across business cycles
- These companies benefit from scale and competitive moats that come from their size
- Underlying securities are a blend of growth and value stocks and are highly liquid



Each of the component funds are decent performers in its respective category

Fund	1 Year Ranking*
Sundaram Services Fund	2 nd Quartile
Sundaram Large Cap Fund	2 nd Quartile
Sundaram Large & Midcap Fund	3 rd Quartile
Sundaram Multicap Fund	3 rd Quartile



Additionally, MSCI India ETF will be added as a component

1

Low-cost alternative to gain targeted access to 85% of the Indian stock market

2

Exposure to Large and Mid-sized companies in India

3

Added for liquidity and tax management purposes

* Source: Value Research, one year ranking based on peer fund universe, in INR Terms as on 7 November 2022



Based on long term track record, four domestic funds were picked from the Sundaram and Principal stables.



Each were given an equal allocation with a fixed 5% allocation to MSCI India ETF and 3% to Cash (for liquidity and tax management purposes).



Total Expense Ratio (TER) of SIOF assumed at 1.5% p.a.



Performance of each fund component is based on actual historic performance and is net of all fees. No interest earnings is assumed for the cash component.



Allocation* between component funds worked out as follows:

Funding allocation	From 1 April 2012	After 21 Sep 2018
Sundaram Large & Midcap Fund	30.7%	23.0%
Principal Multicap Growth Fund	30.7%	23.0%
Principal Emerging Bluechip Fund	30.7%	23.0%
Sundaram Services Fund	-	23.0%
MSCI India ETF	5.0%	5.0%
Cash	3.0%	3.0%

Source: Bloomberg and Inhouse. Launch date: 1 April 2012. Data in USD

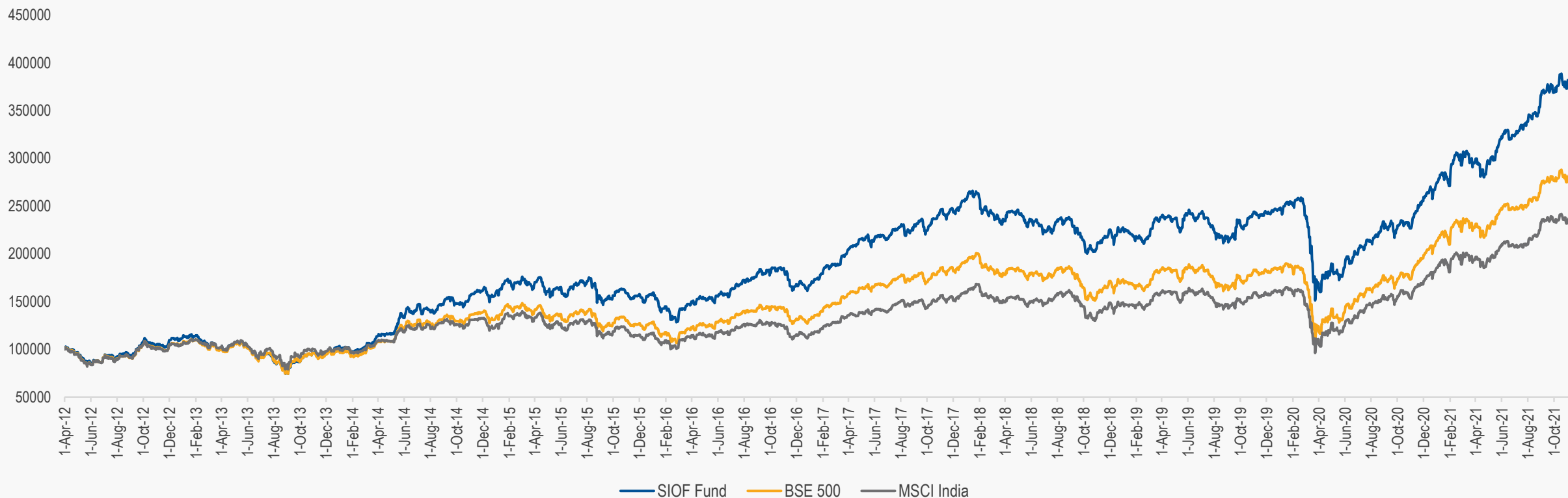
NAV of component funds in Regular Growth class and is net of fees. *Assumed to be a running portfolio and when new fund(s) get added it will be by carving out from the marked to market existing portfolio
Portfolio gets rebalanced when the Sundaram Services Fund gets added on 21 September 2018 (Launch date of Sundaram Services Fund)

Value of \$100,000 invested at launch (simulated)

SIOF Fund-USD 386,779

BSE 500-USD 281,779

MSCI India-USD 238,357



Cumulative Annualized Performance since launch	SIOF	BSE 500 TR	MSCI India TR
	15.1%	11.3%	9.4%

Source: Bloomberg and Inhouse | Launch date: 1 April 2012 | End date: 18 November 2021 | Data in USD | Past performance is no indicator of future performance.



Over this timeframe, the simulated portfolio outperformed the BSE 500 TR and MSCI India TR indices handsomely

Simulated annualised return from 18 Nov 2014 to 18 November 2021 based on actual performance of components and assuming a 1.5% annual TER works out to be 13.2% in USD terms.

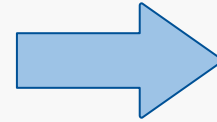
	Fund	BSE 500 TR Index	Outperformance V/s BSE500 TR	MSCI India Net Return index	Outperformance V/s MSCI India
YTD	41.2%	32.3%	+8.9%	28.9%	+12.3%
1 M	-0.5%	-2.2%	+1.7%	-1.4%	+0.9%
3 M	11.1%	8.8%	+2.3%	8.4%	+2.7%
6 M	25.7%	18.0%	+7.7%	18.0%	+7.7%
1 Year	54.1%	46.2%	+7.8%	41.7%	+12.3%
2 Years	26.9%	25.5%	+1.4%	24.0%	+2.9%
3 Years	21.2%	19.6%	+1.6%	18.6%	+2.6%
5 Years	18.4%	16.8%	+1.6%	16.1%	+2.3%
7 Years	13.2%	10.7%	+2.5%	8.8%	+4.4%

Simulated returns as of Nov.18, 2021 of SIOF, net of 1.5% TER. Returns greater than one year annualized. Past return is no indicator of future return.

Source: Bloomberg and Inhouse. Launch date: 1 April 2012. End date: 18 November 2021. Data in USD

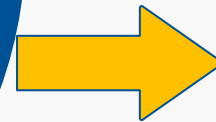
Sundaram Large & Midcap Fund, Sundaram Services Fund and MSCI India ETF were used in the simulation. Descriptions of these have been provided earlier.

Additionally, two other funds considered in the simulation were:



Principal Multicap Growth Fund*

- Diversified equity fund that seeks to invest in fundamentally strong companies across market capitalization
- Multi-cap investment flexibility, enabling the Fund to outperform across market cycles
- Close to 18 years track record across multiple market cycles



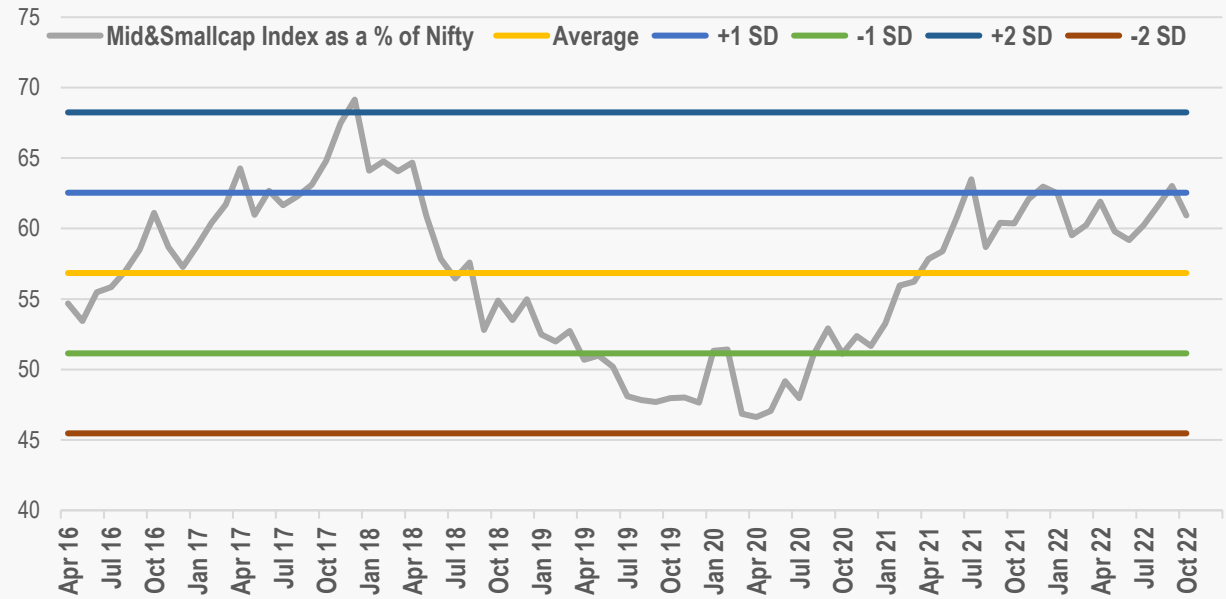
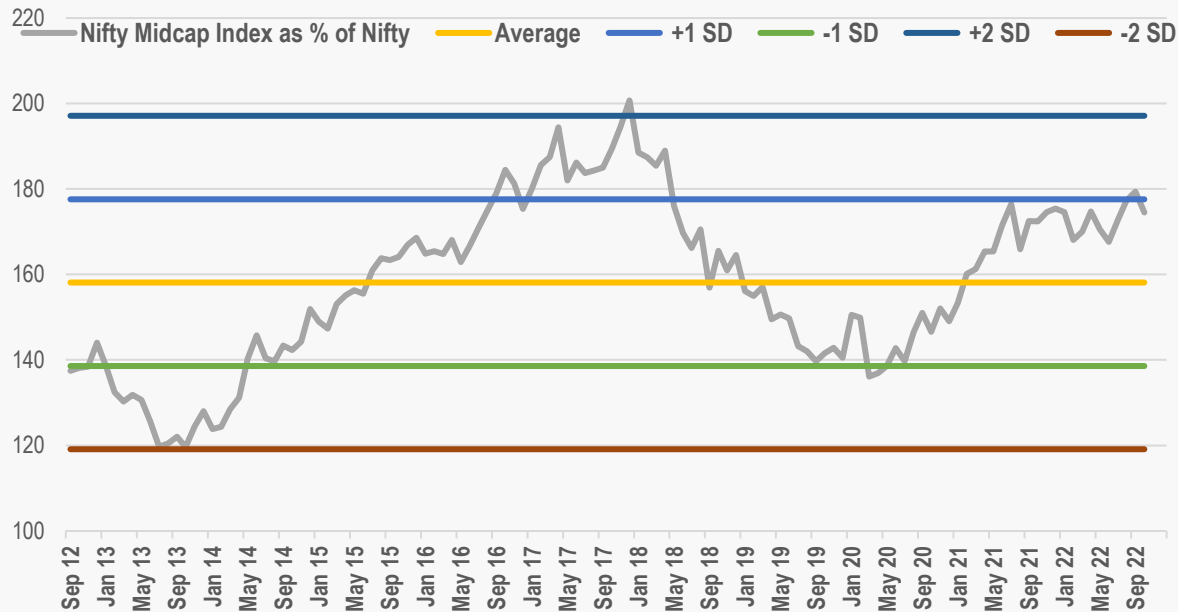
Principal Emerging Bluechip Fund**

- Offers the investors a blend of large and mid cap stocks with an aim to create wealth in the long term
- Invests in large cap and mid cap companies with attractive growth prospects that are available at reasonable valuations
- Seeks to invest in stocks that have the potential to become bluechips in the future
- Close to 10 years track record across multiple market cycles

*Merged to Sundaram Multicap Fund (erstwhile Sundaram Equity Fund) effective 24 December 2021

** Merged to Sundaram Large & Midcap Fund effective 24 December 2021

Monitor Nifty Midcap Index and Nifty Midsmall cap Index as a percentage of Nifty Index



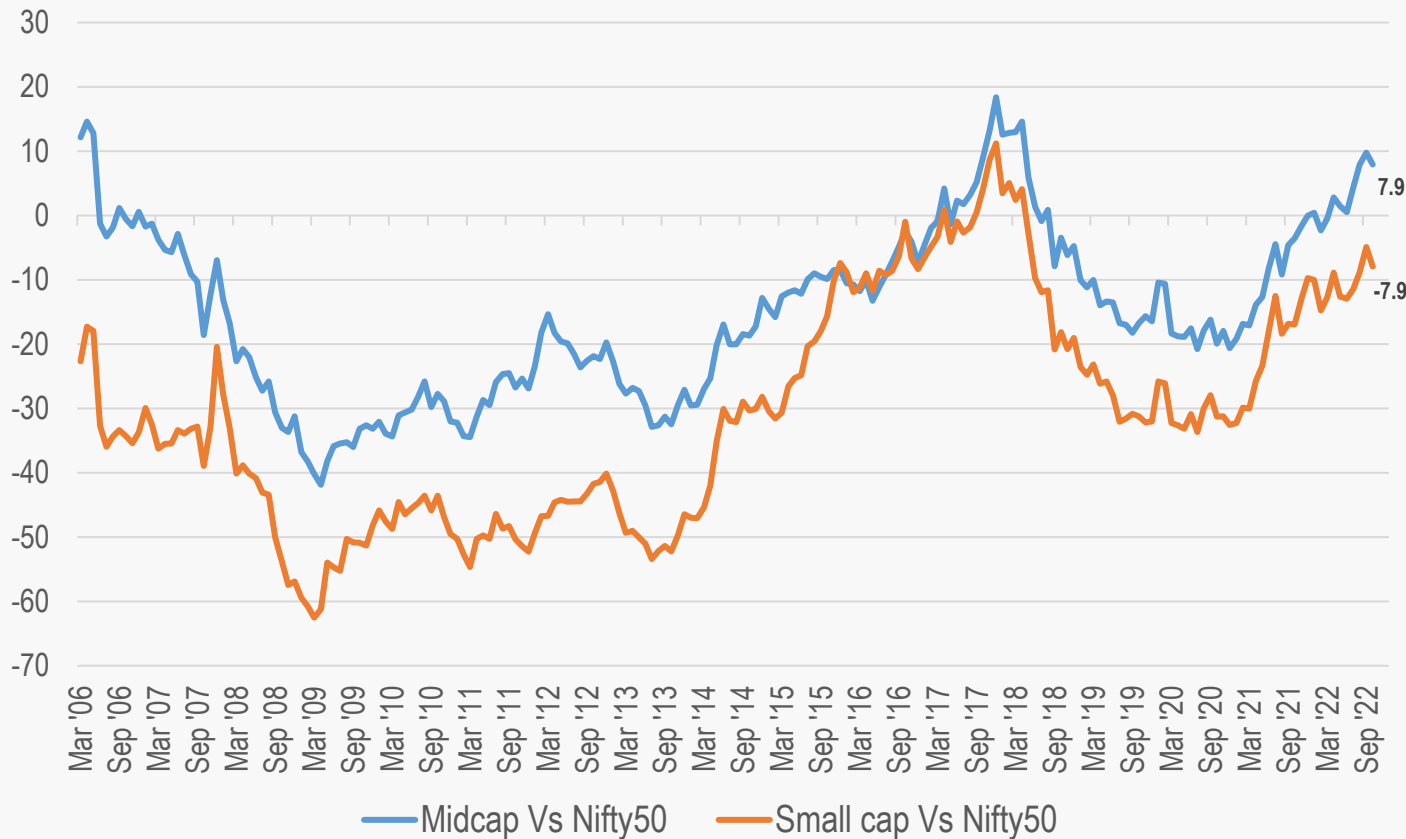
Performance of each component fund will be monitored on a continuous basis to ensure that the best of the breed from the Sundaram house are being chosen for SIOF



Allocations across capcurves will be monitored on a periodic basis to ensure an optimal exposure for the Fund

Monitor Price/Earnings (P/E) Premiums between Nifty Mid/Small cap indices and Nifty index

P/E Premiums between Nifty Index and Nifty Mid and Smallcap indices



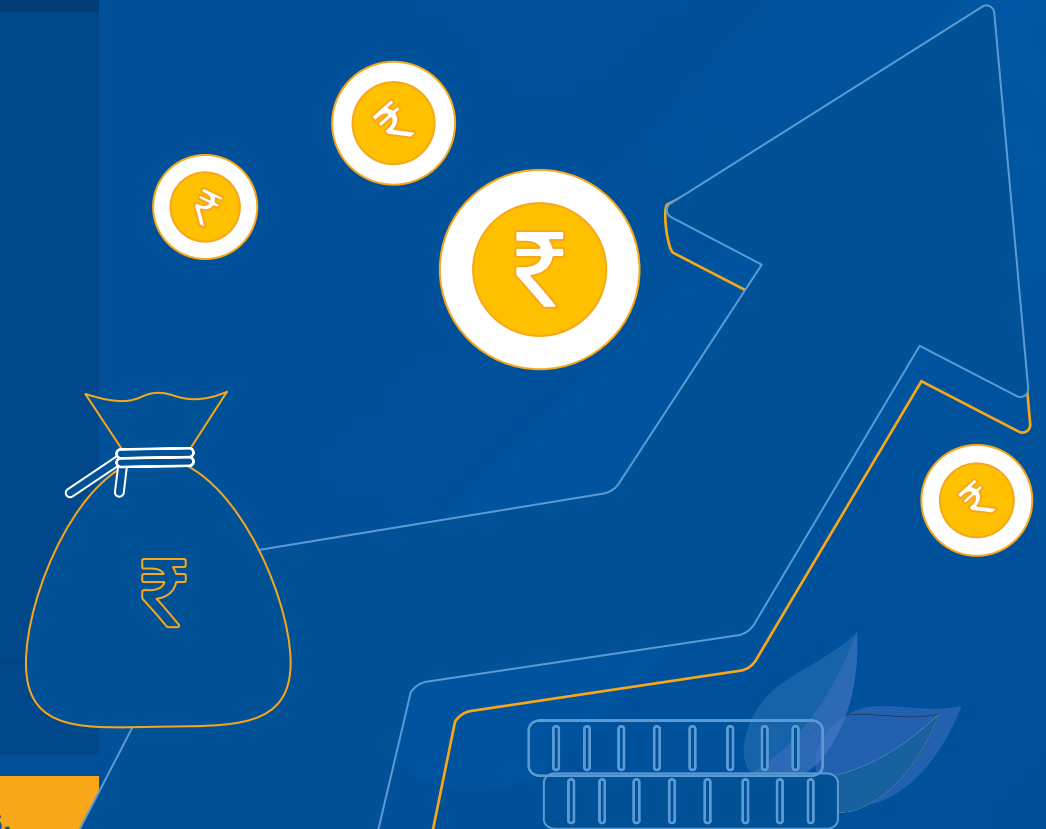
P/E premium/discount indicator works best as a caution indicator i.e. when the midcap P/E premium is 10%+ and small caps are trading at flat or at a premium.



Does not work as a buy signal when the P/Es are at discount.

Name	Sundaram India Opportunities Fund
Fund Domicile	Singapore
Fund Structure	Open ended Unit Trust
Investor Eligibility	Accredited Investors and Institutional Investors
Dealing Frequency	Daily
Investment Manager	Sundaram Asset Management Singapore Pte Ltd
Trustee	HSBC Institutional Trust Services (Singapore) Limited
Global Custodian	HSBC Banking Group
Fund Administrator	HSBC Singapore

Please refer to the Information Memorandum of the Fund for details and risk factors.



Thank You

Anish Mathew

Chief Executive Officer & Chief Investment Officer
Sundaram Asset Management Singapore Pte Ltd
D: +65 65577086
E: anishm@sundarammutual.sg

Ramesh Krishnamurthy

Chief Representative- Middle East & Africa Region
Sundaram Asset Management Company Limited
(Dubai Representative Office)
M: +971 55 5123639
E: ramesh.krishnamurthy@sundarammutual.com

Edmund Teo

Head-Business Development
Sundaram Asset Management Singapore Pte Ltd
D: +65 65577085
E: edmundt@sundarammutual.sg

Karthick Narayanan

AVP-International Business
Sundaram Asset Management Company Limited
(Dubai Representative Office)
M: +971 55 6095049
E: karthick@sundarammutual.com

Sanjana J Nichani

Senior Manager-International Business
Sundaram Asset Management Company Limited
D: +65 65577085
E: edmundt@sundarammutual.sg

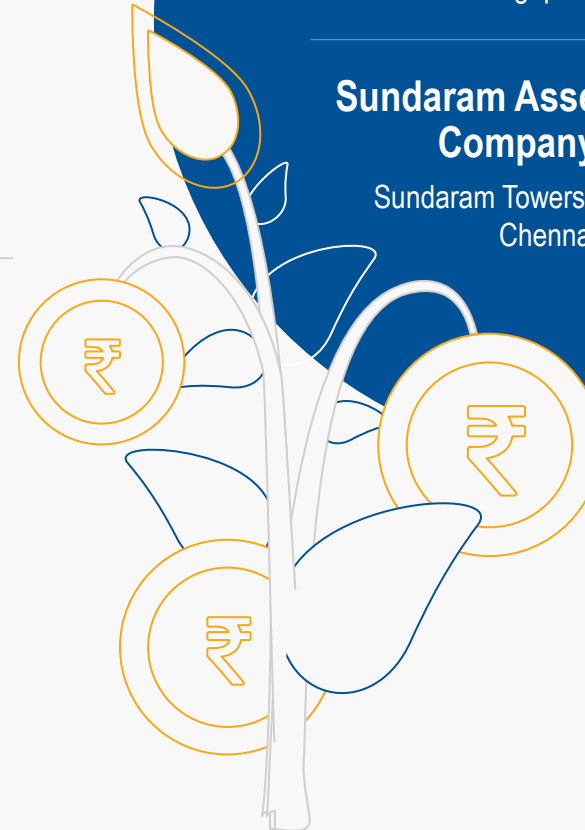
Address

Sundaram Asset Management Singapore Pte. Ltd.

50 Armenian Street, #02-02, Wilmer Place
Singapore 179938

Sundaram Asset Management Company Limited

Sundaram Towers, 46 Whites Road,
Chennai, India



General Disclaimer: This document is issued by **Sundaram Asset Management Singapore Pte. Ltd. (SAMS)** for your exclusive and confidential reference. This document is produced for information purposes only. It does not constitute a prospectus or offer document or an offer or solicitation to buy any securities or other investment. Information and opinion contained in this document are published for the assistance of the recipient only; they are not to be relied upon as authoritative or taken as a substitution for exercise of judgment by any recipient. They are subject to change without any notice and not intended to provide the sole basis of any evaluation of the instrument discussed or offer to buy. The information herein has no regard to the specific objectives, financial situation and particular needs of any specific person. It is neither a solicitation to sell nor shall it form the basis of or be relied upon in connection with any contract or commitment whatsoever or be taken as investment advice. The information and opinions contained in this communication have been obtained from sources that SAMS believes to be reliable; no representation or warranty, express or implied, is made that such information is accurate or complete and it should not be relied upon as such. SAMS neither guarantees its accuracy and/or completeness nor does it guarantee to update the information from time to time. Although every reasonable care has been taken to ensure the accuracy and objectivity of the information contained in this document SAMS and its employees cannot be held liable for any errors, inaccuracies or omissions, howsoever caused, or for any decision or action taken based on the information or views expressed in this document. This communication is for private circulation only and for the exclusive and confidential use of the intended recipient(s). Any other distribution, use or reproduction of this communication in its entirety or any part thereof is unauthorized and strictly prohibited. By accepting this document you agree to be bound by the foregoing limitations. This communication is for general information only without regard to specific objectives, financial situations and needs of any particular person who may receive it and SAMS is not soliciting any action based on this document. In the discharge of its functions, SAMS may use any of the data presented in this document for its decision-making purpose and is not bound to disclose the same. For details about fund management services and performance, please refer to the Disclosure Documents available at the office of SAMS. You may wish to seek advice from a financial adviser before making a commitment to purchase the product. In the event that you choose not to seek advice from a financial adviser, you should consider whether the product in question is suitable for you.

Securities investments are subject to market risks and there is no assurance or guarantee that the objectives of portfolios will be achieved. As with any securities investment, the value of a portfolio can go up or down depending on the factors and forces affecting the capital markets. Investors in the proposed fund are not offered any guaranteed returns and could potentially lose the principal amount invested. SAMS is not responsible or liable for losses resulting from the operations of the proposed fund. Past performance of the Fund Manager may not be indicative of the performance in the future. The value of any portfolio illustrated in this document may be affected by changes in the general market conditions, factors and forces affecting capital markets in particular, level of interest rates, rates of exchange between currencies, various other market related factors such as trading volumes, settlement periods and transfer procedures. Levels and basis of taxation may change from time to time. The liquidity of investments are inherently restricted by trading volumes in the securities in which it invests.